



**doltone house**

VENUE + CATERING COLLECTION

**HYDE  
PARK**

# Business Events

SELECT YOUR SPACE

**BALLROOM**

**MANHATTAN  
& AVENUE**



**doltone house**

HYDE PARK  
SYDNEY CBD

---

# HYDE PARK BALLROOM

**SYDNEY CBD'S  
MOST PRESTIGIOUS  
BALLROOM**

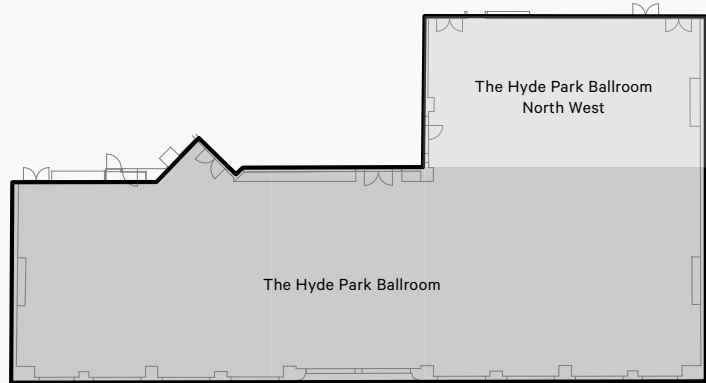
*Doltone House Hyde Park is superbly located within a prestigious sector of Sydney's CBD precinct. Featuring uninterrupted views of Sydney's Hyde Park and adjacent to the 5 star Sheraton On The Park Hotel, it boasts five metre high ceilings with an abundance of natural light via the spectacular arched windows.*

**WINNER**

**MEETINGS AND EVENTS INDUSTRY HALL OF FAME  
SPECIALTY MEETING VENUE**

# Hyde Park - BALLROOM

- Pillarless Ballroom in Sydney CBD
- Abundance of natural light via floor to ceiling arched windows and 5 metre high ceilings
- Versatile space for up to 700 people
- Uninterrupted views of Sydney's Hyde Park
- Breakout rooms accommodating 40 to 150 guests
- Custom Lighting features
- State of the art Audio Visual (AV)
- Touch screen technology, shading out the day with sheer blinds or total blackout



Uninterrupted views of Sydney's Hyde Park



## FOOD & CATERING

- AWARD WINNING -

Serving Sydney's best quality produce, from the freshest of seafoods, and the premium cut of meats, we source only the highest standard for you.

## CAPACITIES & FACILITIES

	Ballroom	South	North and North West	Manhattan
COCKTAIL	650	200	400	200
BANQUET	500	150	350	100
THEATRE	700	250	400	150
CLASSROOM	370	130	220	60
AUDIO VISUAL	✓	✓	✓	✓
VIDEO CONFERENCING	✓	✓	✓	✓
PARKING	✓	✓	✓	✓
DISABLED ACCESS	✓	✓	✓	✓
HIGH SPEED WIFI INTERNET	✓	✓	✓	✓

*Not to scale, capacities subject to event set up requirements*



## PARKING

**Sheraton on the Park Parking**  
138 Castlereagh Street

**Secure Parking Piccadilly**  
137 Castlereagh Street  
(02) 8912 4900

**Wilson Parking**  
175 Liverpool Street  
1800 727 546

**Domain Car Park**  
2 St Marys Road  
(02) 9232 6165

**The Cathedral Street Car Park**  
2 Cathedral Street  
(02) 9380 8850

**Doltone House  
Hyde Park**

3/181 Elizabeth Street,  
Sydney, 2000

## LOCATION

Superbly located within a prestigious sector of Sydney's CBD precinct and exclusive retail outlets, Doltone House Hyde Park is also directly adjacent to the 5-Star Sheraton on The Park Hotel.



**doltone house**

HYDE PARK  
SYDNEY CBD

---

**MANHATTAN  
& AVENUE**

**NEW YORK  
INSPIRED**

*Brand new purpose built meeting and event space that are multifunctional, diverse and designed as the ultimate place for conducting executive meetings, elegant cocktail affairs, intimate dinners or a fresh view on breakfast.*

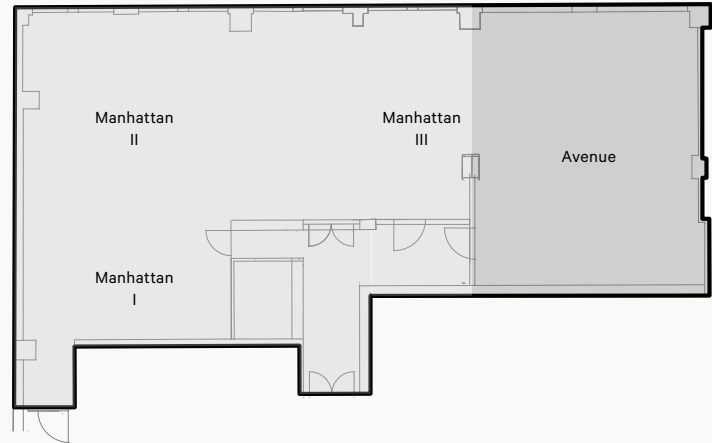
---

**WINNER**

**MEETINGS AND EVENTS INDUSTRY HALL OF FAME  
SPECIALTY MEETING VENUE**

# Hyde Park - MANHATTAN & AVENUE

- Sydney CBD location
- Pillarless, fully carpeted floor space
- Blend of contemporary and old world Manhattan ambience
- High ceilings & architectural features
- Intimate space for small groups designed for a variety of events
- Abundance of natural light with fresh colour palette
- Equipped with the latest state-of-the-art technology and WiFi internet access



## FOOD & CATERING

- AWARD WINNING -

Serving Sydney's best quality produce, from the freshest of seafoods, and the premium cut of meats, we source only the highest standard for you.

## CAPACITIES

	Manhattan 147m <sup>2</sup>	Manhattan I & II 118m <sup>2</sup>	Manhattan + Avenue 225m <sup>2</sup>	Avenue 78m <sup>2</sup>
DINNER	100	80	170	60
DINNER DANCE	100	60	150	40
COCKTAIL	150	150	200	80
THEATRE	150	95	210	65
CABARET	55	40	80	45
CLASSROOM	60	45	90	48
U-SHAPE	42	30	-	24
BOARDROOM	42	24	-	24

*Not to scale, capacities subject to event set up requirements*



## PARKING

**Sheraton on the Park Parking**  
138 Castlereagh Street

**Secure Parking Piccadilly**  
137 Castlereagh Street  
(02) 8912 4900

**Wilson Parking**  
175 Liverpool Street  
1800 727 546

**Domain Car Park**  
2 St Marys Road  
(02) 9232 6165

**The Cathedral Street Car Park**  
2 Cathedral Street  
(02) 9380 8850

**Doltone House  
Hyde Park**

3/181 Elizabeth Street,  
Sydney, 2000

## LOCATION

Superbly located within a prestigious sector of Sydney's CBD precinct and exclusive retail outlets, Doltone House Hyde Park is also directly adjacent to the 5-Star Sheraton on The Park Hotel.



**doltone house**

VENUE + CATERING COLLECTION

**HYDE PARK**

3/181 ELIZABETH STREET,  
SYDNEY 2000

**P** 02 8571 0622

**E** [INFO@DOLTONEHOUSE.COM.AU](mailto:INFO@DOLTONEHOUSE.COM.AU)

**[DOLTONEHOUSE.COM.AU](http://DOLTONEHOUSE.COM.AU)**