

# VENUE INFORMATION PACK

*MicDrop*

**CUBES3122**  
**HAWTHORN**

CreativeCubes.Co

# A FIRST CLASS VENUE WITH SWAGGER, IN HAWTHORN

A brand new industrial chic event space, Cubes3122 is located within the CreativeCubes.Co building at 10 Oxley Road, Hawthorn.

The space features a polished concrete floor, exposed brick and timber panelled walls with plenty of natural light through windows down the length of the space.

With 145sqm including dimmable lighting, breakout boardroom & meetings rooms available on site and dedicated high speed wifi network. The event space is ideal for workshops, team meetings, presentations, briefings and product launches.

If you are looking for an event space that inspires and isn't your run of the mill venue, Cubes3122 is the place.

**VENUE**

*MicDrop*







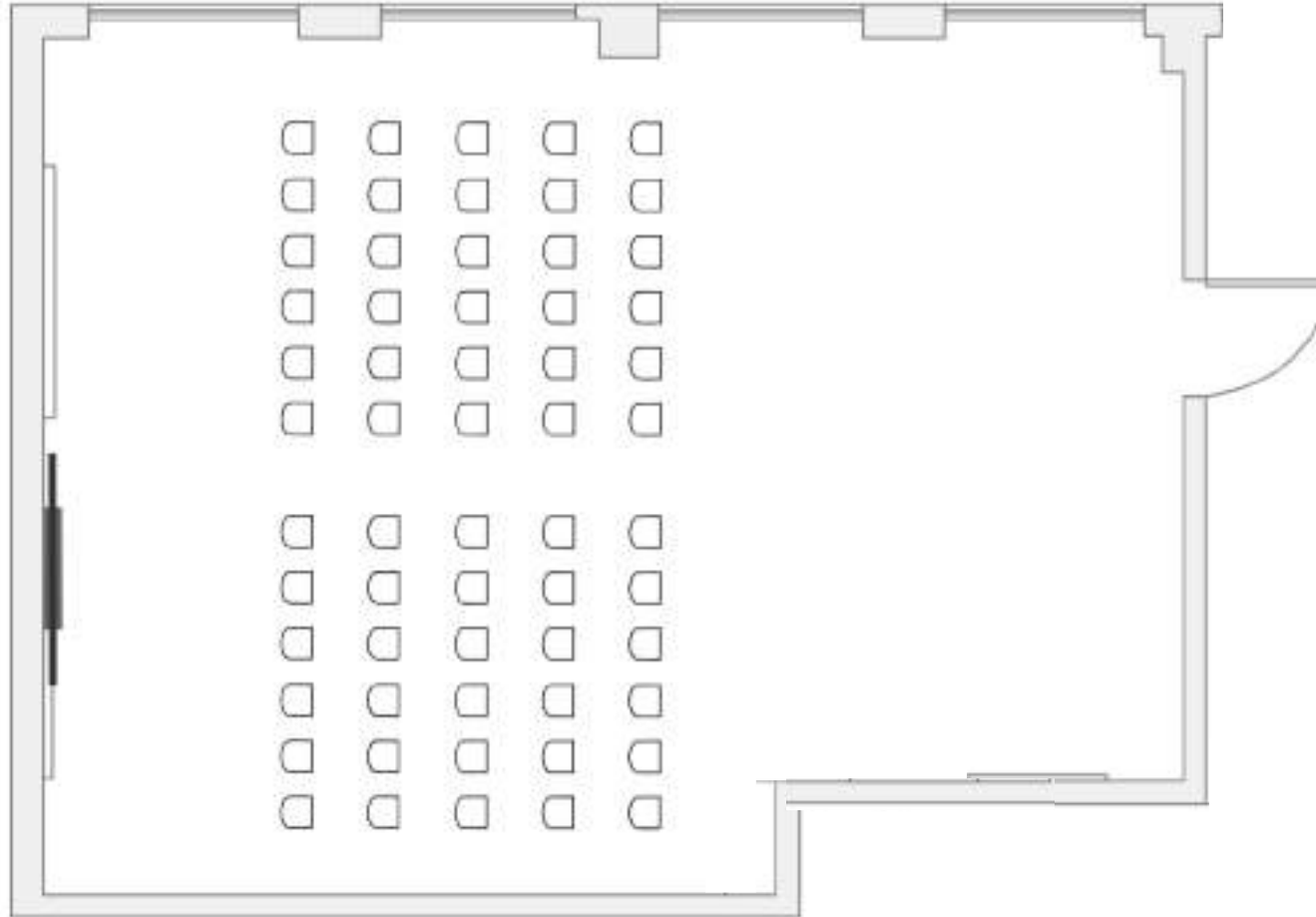




# VENUE FLOOR PLAN



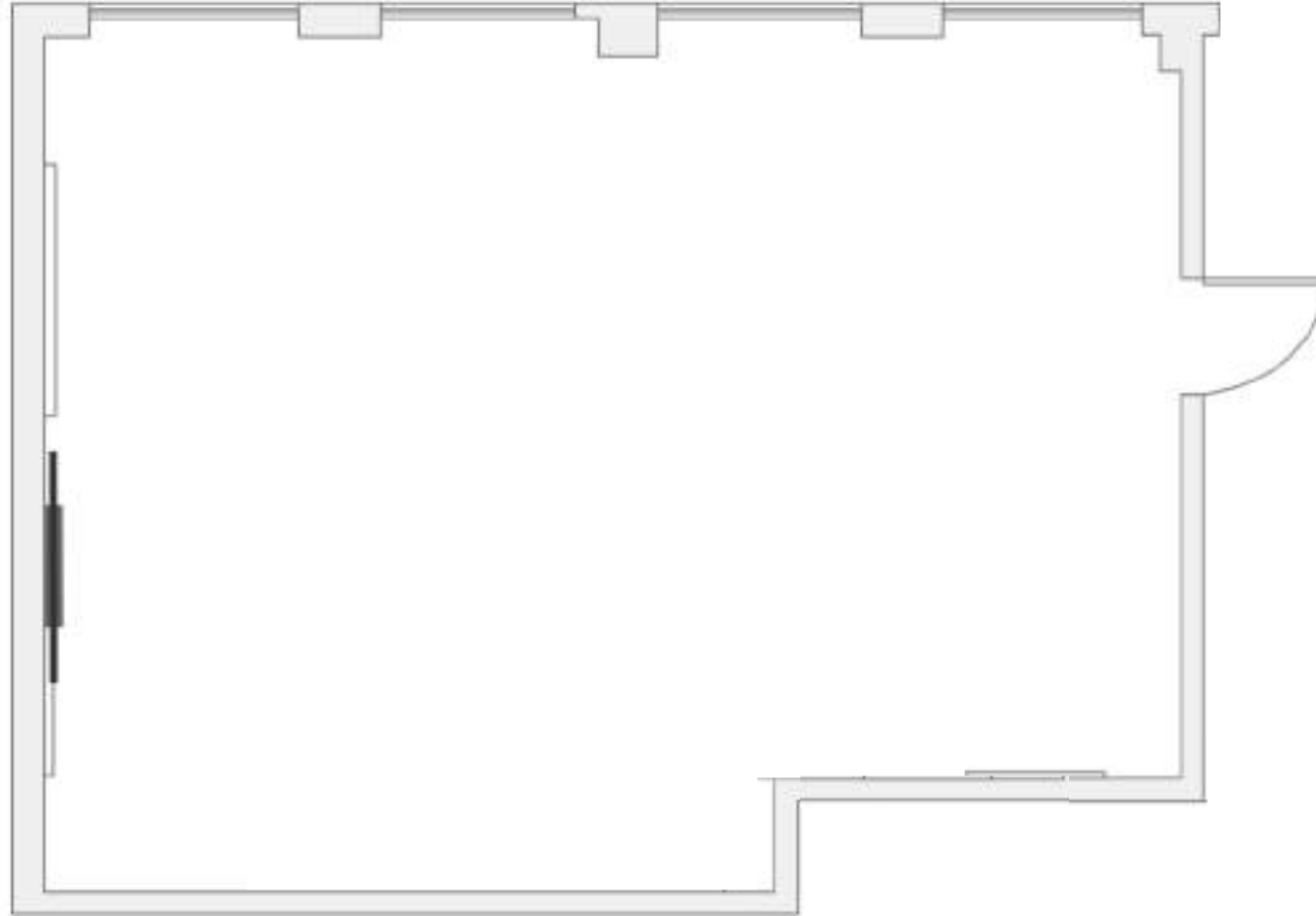
# STANDARD 60PAX



**FLOOR PLAN OPTION**

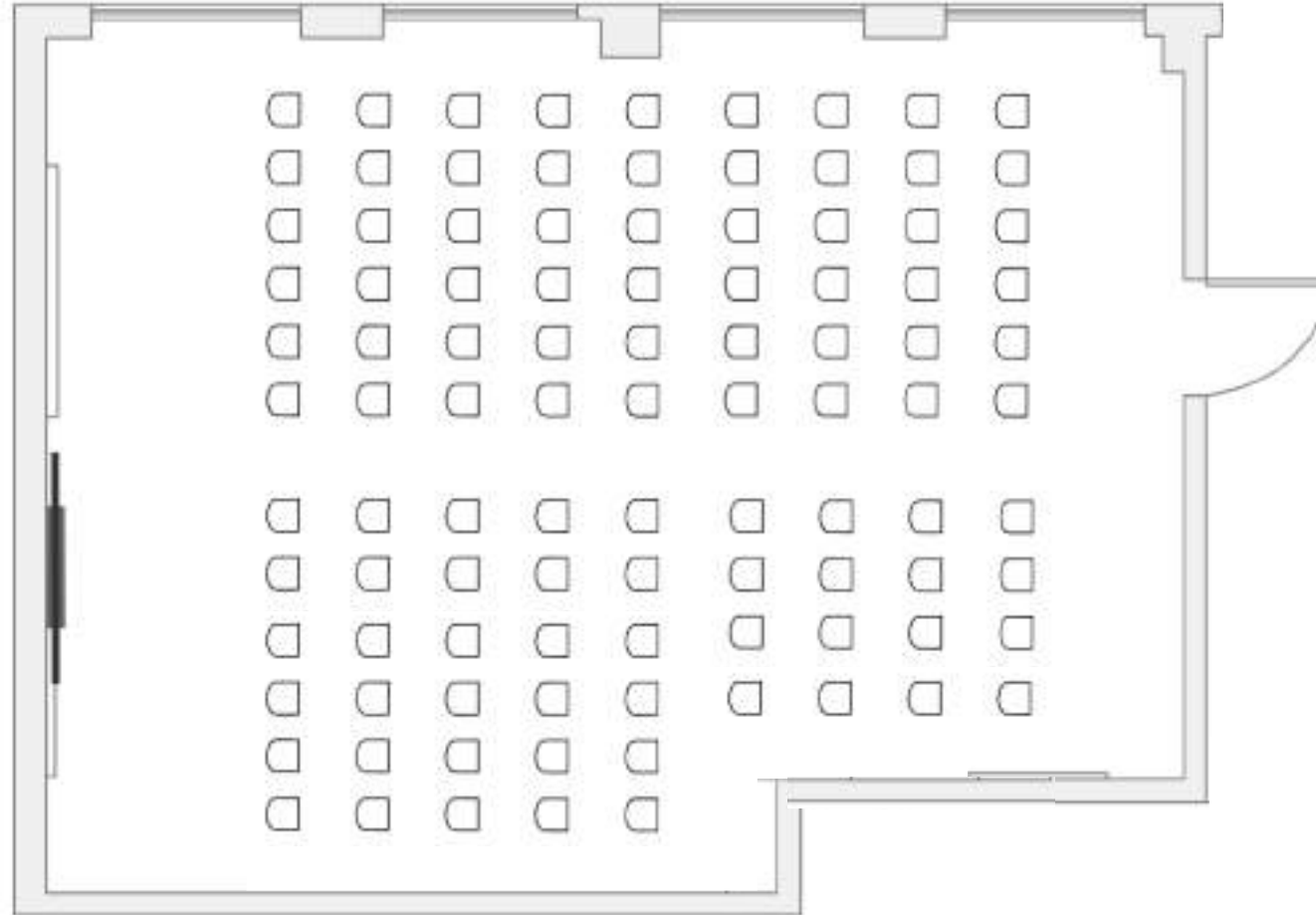


# COCKTAIL 120PAX



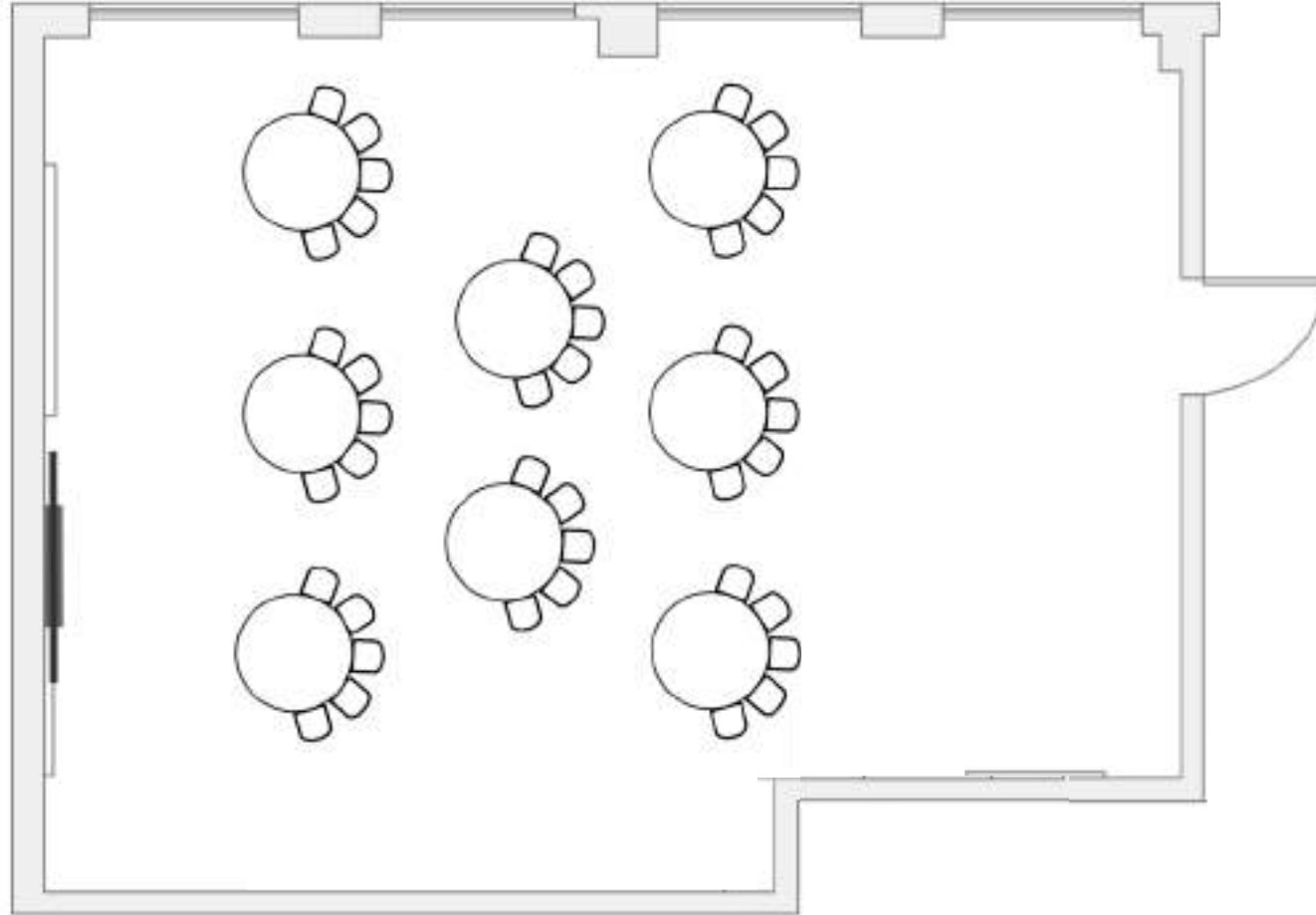
**FLOOR PLAN OPTION**

# THEATRE STYLE 100PAX



**FLOOR PLAN OPTION**

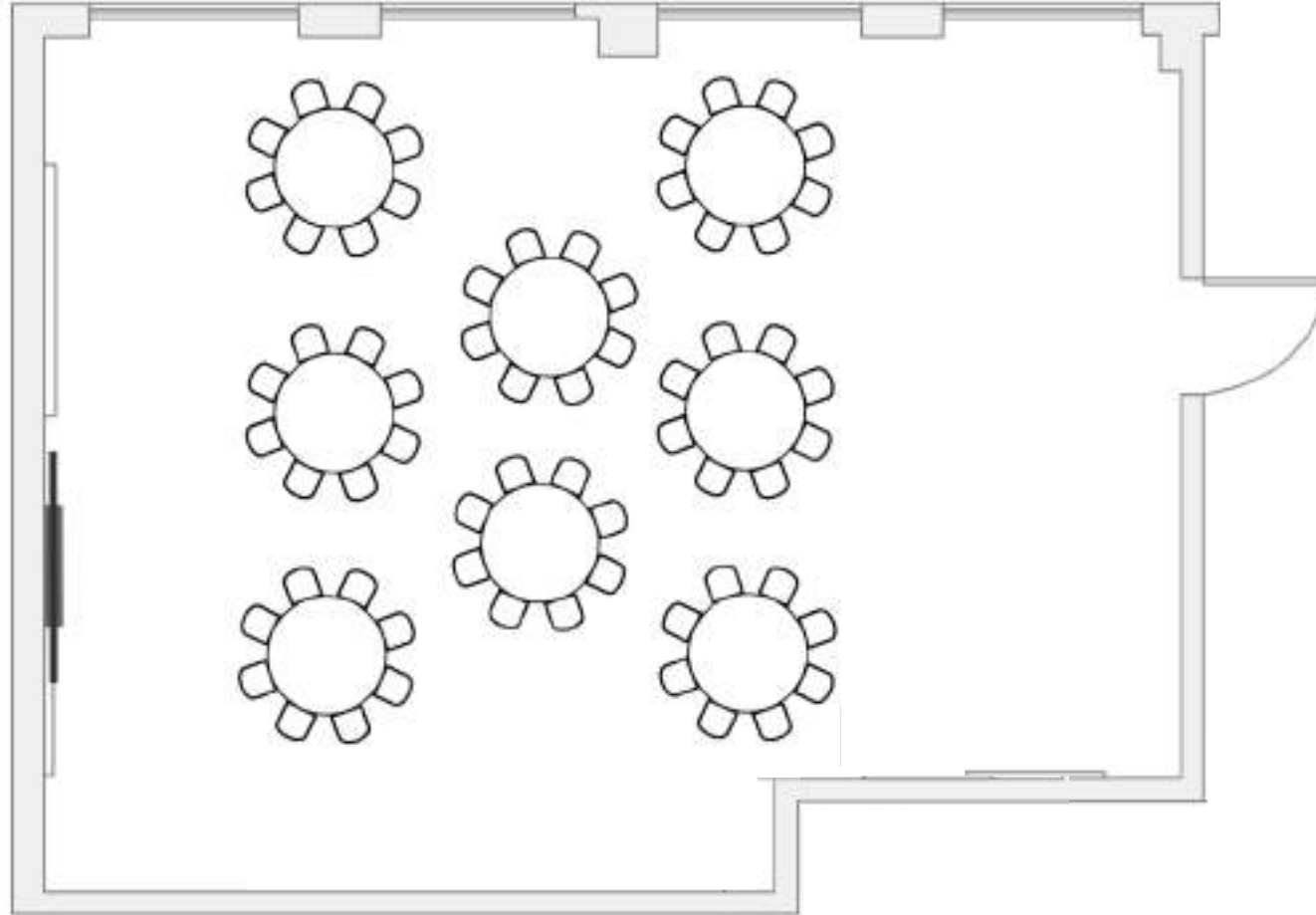
# CABARET ROUNDS 40PAX



**FLOOR PLAN OPTION**



# BANQUET ROUNDS 64PAX



**FLOOR PLAN OPTION**



# FURNITURE

## INVENTORY

Sleek custom designed lounge furniture is available for use, and included in venue hire.

Should you require any additional furniture, you are welcome to arrange this yourself via our recommended suppliers and partners who know the venue well.

- 10 x Trestle tables (see next column regarding linen)
- 9 x Round banquet tables (see next column regarding linen)
- 3 x Wooden hightop cocktail tables
- 100 x Wooden back leather chairs

## LINEN

It is recommended that linen is used to cover the trestle and round tables.

The MicDrop team are able to suggest a linen supplier.

**AUDIO  
VISUAL**

*MicDrop*





# AUDIO VISUAL SYSTEM

## AUDIO

- Clarity focused audio system, with in built delays and easy to use operation via a wall panel control screen
- 2 x handheld microphones
- 3.5mm or RCA audio input
- 2 x lapel microphones
- Apple AirPlay wireless playback
- PC/Android Miracast wireless playback

### AV SYSTEM

\$300 inc gst, per day.

## VISION

- 84" 4K screen
- HDMI input, aligned to audio
- Apple AirPlay wireless screen share
- PC/Android Miracast wireless screen share

## CONTROL LOCATIONS

- HDMI port front of room, for easy presenter access
- Side of room for front of house operation
- Wireless iPad for roving control of audio and switching vision

# FOOD + BEVERAGE

SERVED BY



# MORNING / AFTERNOON TEA

(min 10 serves p/item)

**MINI MUFFINS** – a mixed selection served hot, from our oven (\*V) - \$4pp

**MIXED MINI DANISH PASTRIES** – inc. lemon curd, blueberry, apple & raspberry crown (\*V) - \$5pp

**FRUIT BREADS** – served buttered and warm - \$6pp

Banana (\*V/NF/DF)

Banana & Walnut (\*V/DF/CTN)

Blueberry & Banana (\*V/NF/DF)

**NUT FREE, ASSORTED COOKIES** (\*V) - \$3.50pp

**MIXED SLICE BITES** (\*V/GF) - \$5pp

**TOAST** – Fresh, hot buttered sourdough toast w/ your favourite spreads - \$6 pp (Min 10)

**MUESLI** – Small batch toasted muesli w/milk, yoghurt & honey (\*V) - \$7pp

**FRUIT PLATTER** (serves 10) - \$45



# LUNCH + BEVERAGES

(min 10 serves p/item)

## **SANDWICHES, WRAPS & PIADINAS - \$12pp**

Mixed, fresh cut Sandwiches

Italian chicken Caesar Piadina (flat bread)

Roasted Veg Roti wrap (\*V/EF)

Toasties – tom & cheese - with or without ham (\*NF/EF)

## **SAVOURY**

Roasted vegetable frittata - \$9pp (\*V)

Fresh baked Gourmet beef, sausage rolls w/Tomato & fruit relish \$6.50pp

Mini Beef & Red Wine, short crust pies served with old school tomato/relish/chilli sauces \$3.80each

Mac & Gruyere Cheese Croquettes \$3each (\*V)

## **FRUIT PLATTER (serves 10) - \$45**

## **SALADS - \$9.5 pp (min 10 serves)**

Creamy Potato w/baby spinach leaves & mustard mayo dressing (\*V)

Quinoa, Chicken & Cranberry w/Rocket toasted almonds and Chim Churri dressing (\*GF/DF/EF)

Roquette, Pear & Pine nut w/ balsamic glaze (V/DF/EF/GF)

## **COLD PRESSED JUICES – \$8pp**

## **SMOOTHIES - \$8pp**

## **VENEZIANNO COFFEE & TEA STATION**

½ day station \$6pp

Full day \$10pp (minimum 15 guests)

**Catering order to be submitted 14 days prior to event date.**

**Final attendee total & dietary requirements due 7 days prior to event date.**

All prices include GST and staffing for your event.

\* V = Vegetarian

GF = Gluten Free

DF = Dairy Free

EF = Egg Free

NF = Nut Free

# RECOMMENDED SUPPLIERS

## HIRE EQUIPMENT

Should you require additional furniture, catering equipment, glassware etc for your event then we recommend our hire partner Harry The Hirer. You are also welcome to organise through your own supplier should you prefer.

## CATERING

Cubes3122 features access to a communal kitchen, sink, hot and cold running water and power outlets. We recommend our catering partner Cookes Food who can assist with all types of event catering styles or feel free to organise your own.

## ADDITIONAL AV EQUIPMENT

Should you require any additional AV equipment we recommend Technical Events who will be able to assist you with all types of AV set ups in our space.

## LINEN HIRE

For linen to cover round table and trestles we recommend Simmons Linen Hire.



### Craig Garrow

Harry The Hirer

CraigG@harrythehirer.com.au  
03 9429-8688  
www.harrythehirer.com.au



### Elaina Ware

Cookes Food

elaina@cookesfood.com.au  
0404 205 295  
www.cookesfood.com.au



### David Wailes

Technical Events

dave@technicalevents.com.au  
03 9372 6886  
www.technicalevents.com.au



### Simmons Linen

info@linenhiredi.com.au  
03 9500 2499  
www.simmonslinenhire.com.au



# NEED TO KNOW VENUE INFO

## CONTACT

cubes3122@creativecubes.co

## 7 DAYS

Cubes3122 is available 7 days a week from 8:00am - 12:00am.

## RESTROOMS

Male and female restrooms as well as separate accessible restroom.

## HEATING & COOLING

Keep your guests comfortable throughout the day with in house heating & cooling system.

## LOADING ACCESS

## ADDRESS

10 Oxley Road  
Hawthorn  
VIC 3122

## TRAIN

Glenferrie Station

## TRAM

Route 16  
Manningtree Road Stop  
Manningtree Road / Glenferrie Rd Stop

## STREET PARKING

Along Glenferrie Road & Oxley Road, fees apply

## PAID PARKING

Directly opposite Cubes3122 is large paid parking facility, local council managed.





## LOOKING FOR A DIFFERENT VENUE?

### INTRODUCING CUBES3121 RICHMOND

A brand new industrial chic event space, Cubes3121 is located within the CreativeCubes.Co building at 534 Church St, Richmond.

The space features a polished concrete floor, exposed brick and timber panelled walls with plenty of natural light through windows down the length of the space.

With 120sqm including a stage, dimmable lighting, connected kitchen facilities, connected breakout boardroom and dedicated high speed wifi network. The event space is ideal for workshops, team meetings, presentations, briefings and product launches.

If you are looking for an event space that inspires and isn't your run of the mill venue, Cubes3121 is the place.

# NEED TO STRETCH?

YOGA BY

**REBEL  
MONK**



# REBEL MONK

Rebel Monk is a state-of-the-art Yoga studio at CreativeCubes.Co Hawthorn, with 44 weekly classes.

Options are available to add a dedicated yoga session to your event. Alternatively guests can join a regular class with an hour of focused movement, breathing and relaxation.

With thirty mat spaces, spa-quality changing rooms and talented teachers who bring everything they've got. Rebel Monk can add value to anyone's day. Your guests will be relaxed into their most creative and productive mindset, ready for everything you have in store for them.

Get centred. Get balanced. Get focused. Get real. And get ready for a more kick-ass version of you.

This is Rebel Monk.

Contact [hawthorn@rebelmonk.co](mailto:hawthorn@rebelmonk.co) for more information.

