

# CROPLEY HOUSE

BAULKHAM HILLS



Built in the 1920's and placed within five acres of parklands, Cropley House is set to become the premier event destination in the Hills district with the unveiling of a new refurbishment restoring the mansion to its former grandeur.

Catering for up to 450 guests, Cropley House will be the premier venue in Baulkham Hills with its iconic features of manicured gardens, a grand circular driveway, long undercover balconies covered with wisteria, elegant ballrooms and a sweeping staircase that will deliver all styles of events such as Conferences, Business Events, Weddings and School Events.

## SERVICES & FACILITIES

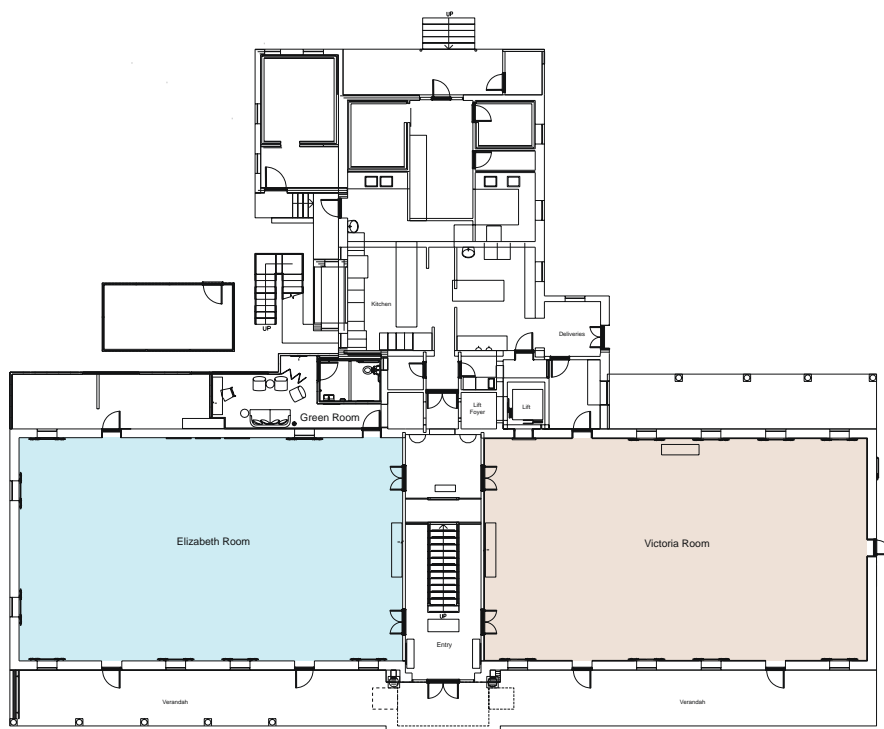
- Fully renovated in 2018 by renowned designer Joanne Green.
- Onsite commercial kitchen facilities.
- Onsite executive chef, kitchen & venue operations team.
- Extensive range of restaurant quality menus & beverage selection.
- Highly versatile, multi-function venue.
- 4 breakout rooms suitable for conferences.
- 2 "green rooms" or speaker preparation rooms.
- Outdoor under cover balcony for pre-function area or catering breakout area.
- Fully air-conditioned.
- Rooms offer both natural light & black out facilities
- Direct loading dock & coach access
- Complimentary on-site parking
- Wheelchair accessible.

www.cropleyhouse.com

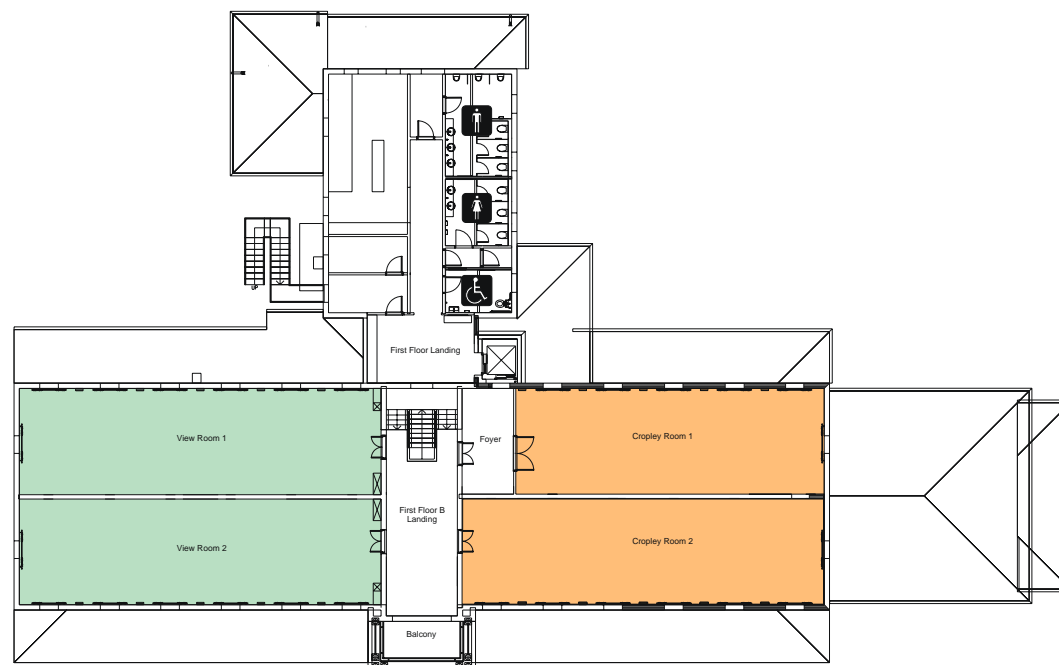
# CH

ROOM	Measurement (sqm)	Ceiling Height (m)	Cocktail	Banquet w/Dance Floor	Banquet	Theatre	Cabaret
Entire Venue	-	-	450	-	-	-	-
Victoria Room	192	4.3	250	180	150	180	120
Elizabeth Room	192	4.3	250	180	150	180	120
View Room I	96	3.8	150	90	70	90	72
Cropley Room I	81	3.8	90	70	50	70	56
View Room II	96	3.8	150	90	70	90	72
Cropley Room II	96	3.8	150	90	70	90	72

GROUND FLOOR



OVERALL FIRST FLOOR



## CONTACT

Kristen Zucconi 02 9686 7775 | 0425 356 700  
 E: sales@cropleyhouse.com  
 84 Watkins Road, Baulkham Hills NSW 2153

All capacities may vary depending on audio visual, production, entertainment and catering requirements. Our sales & event management team member will assist you with a floor plan tailored to your event specifications.

- The venue's banquet table is round and the measurement is 1.6m. Each table sits 10 persons comfortably.
- Cabaret style is based on 8 persons per table, utilising the venues banquet table.
- Theatre style is with chairs only.