



ACMI

AUSTRALIAN CENTRE FOR THE MOVING IMAGE

Set the scene for your next event amongst the creative spaces of ACMI – an exciting, contemporary destination where a striking backdrop awaits for forums, launches, seminars or celebrations – right in the heart of the CBD.

PETER ROWLAND



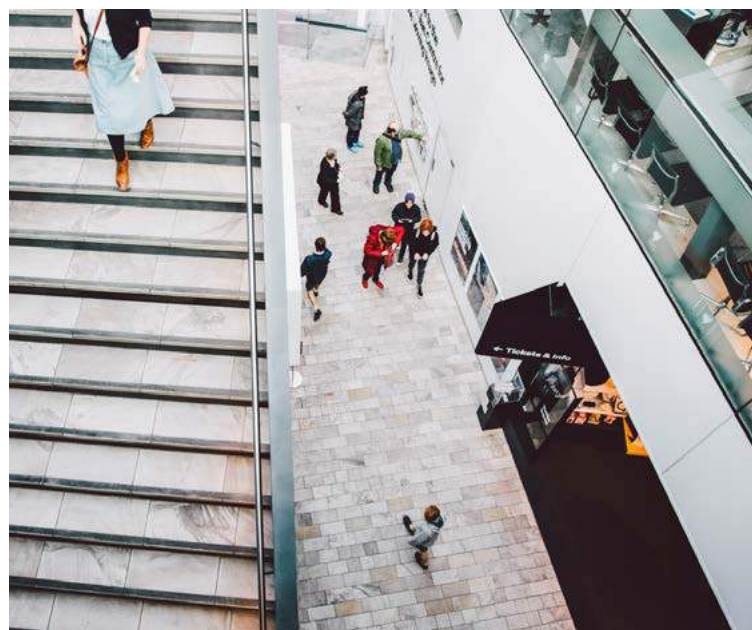
ICONIC VENUE

CREATIVE IMPACT

Create your own event experience amongst ACMI's Cube and Lightwell spaces or draw on the Cinemas, the Studio and permanent exhibitions on offer.

Features include:

- ACMI's location within Melbourne's Federation Square is ideal for launches and corporate functions
- Flexible spaces and contemporary settings await your event vision with multiple options for styling, interactive events, break out spaces, registration areas and pre event drinks
- Lightwell is a perfect red carpet and large celebration event space capable of hosting up to 600 guests
- Incorporate the elements of current exhibitions into your event, seminar or conference
- Modern presentation facilities, in house audio visual, studio green screen, and two state of the art cinemas offering dynamic presentation opportunities



ICONIC VENUE

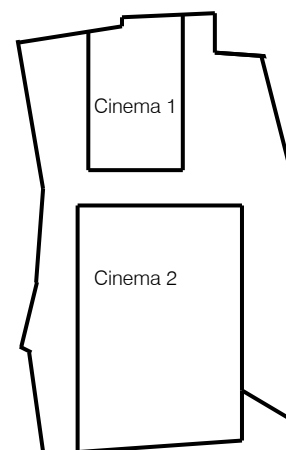
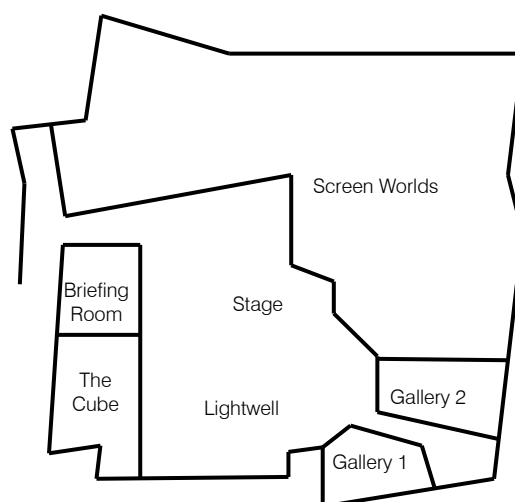
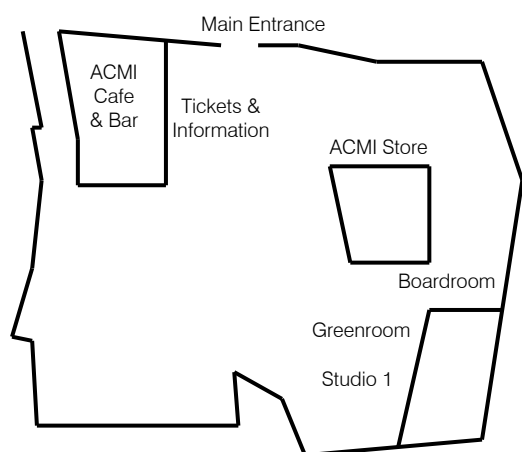
Room Capacities	Area (m ²)	Boardroom	Theatre	Classroom	Cabaret	Cocktail	Banquet	Banquet w/ dance floor
Cinema 1	123		168					
Cinema 2	454		390					
The Cube	130		120	36	80	130	100	80
The Lightwell	600					400	70	70
Studio 1	193		70			90		
Screen Worlds	1200					150	70	70
ACMI Cafe & Bar	250					170	95	95
The Lightwell & Screen Worlds	1800					600		
Boardroom	72	20			18		20	20

“Set the scene amongst the creative & striking spaces of ACMI...”

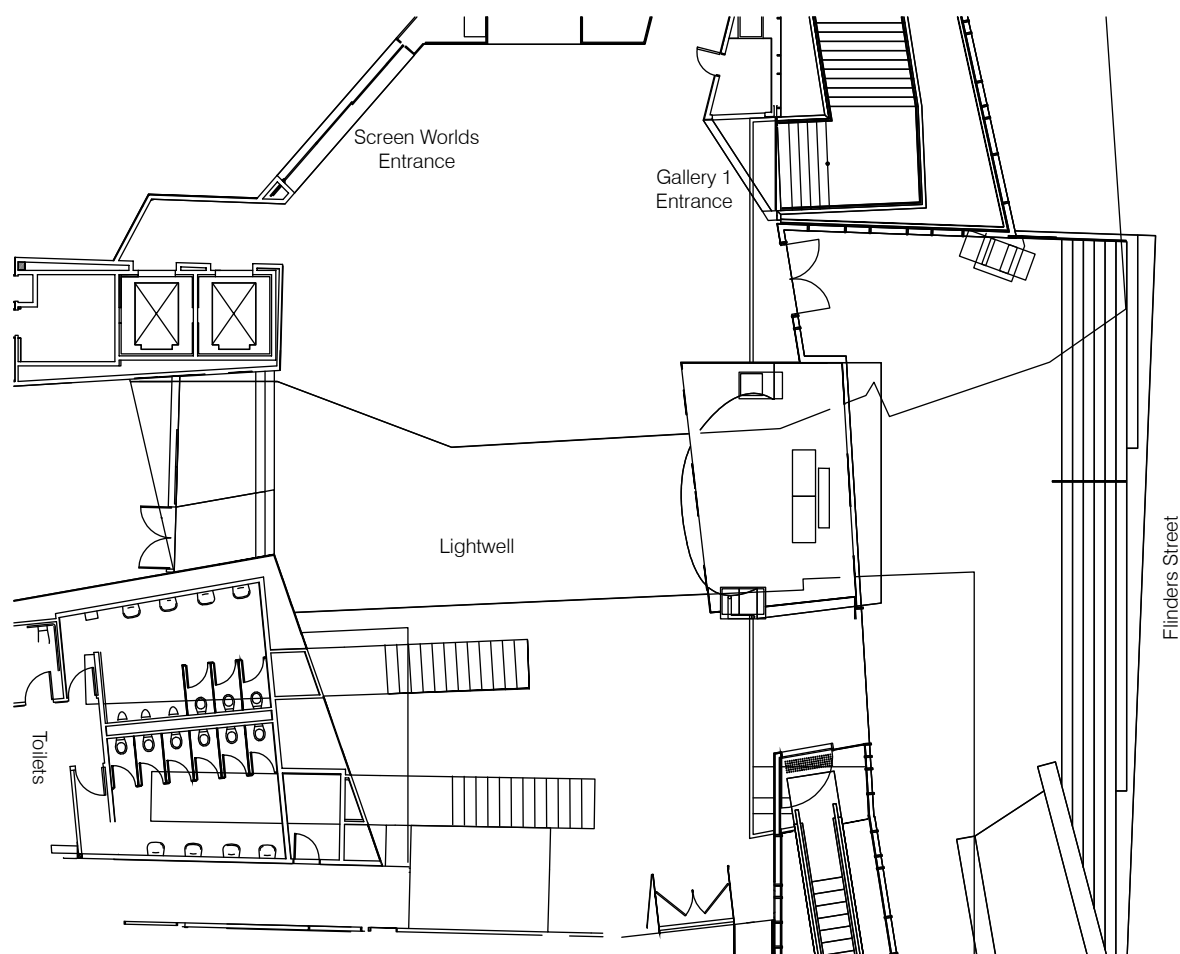
Entry Level

Galleries Level

Cinemas Level



The LIGHTWELL



The contemporary Lightwell with soaring glass ceilings overlooking Flinders Street is the gateway to ACMI's many galleries. This contemporary space filled with natural light is ideal for large welcome receptions, launches and red carpet premieres.

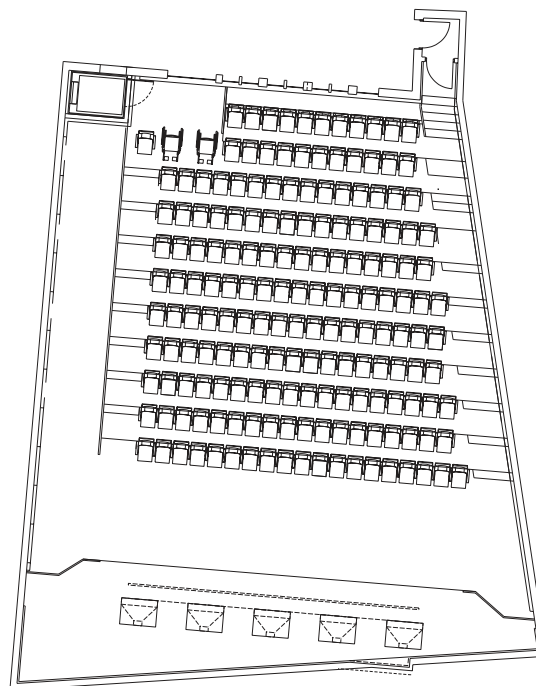


CINEMA 1 & 2

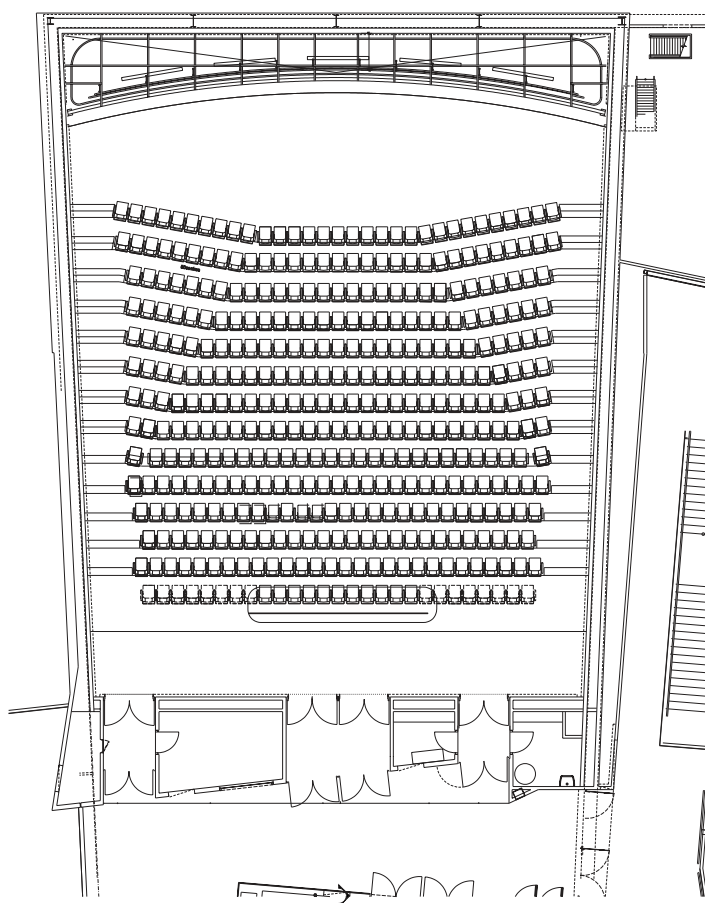
Two state of the art cinemas, perfect for conferences, product launches, film screenings, lectures and presentations. With in house audio visual, tiered seating and quality surround sound for an engaging experience.



Cinema 1

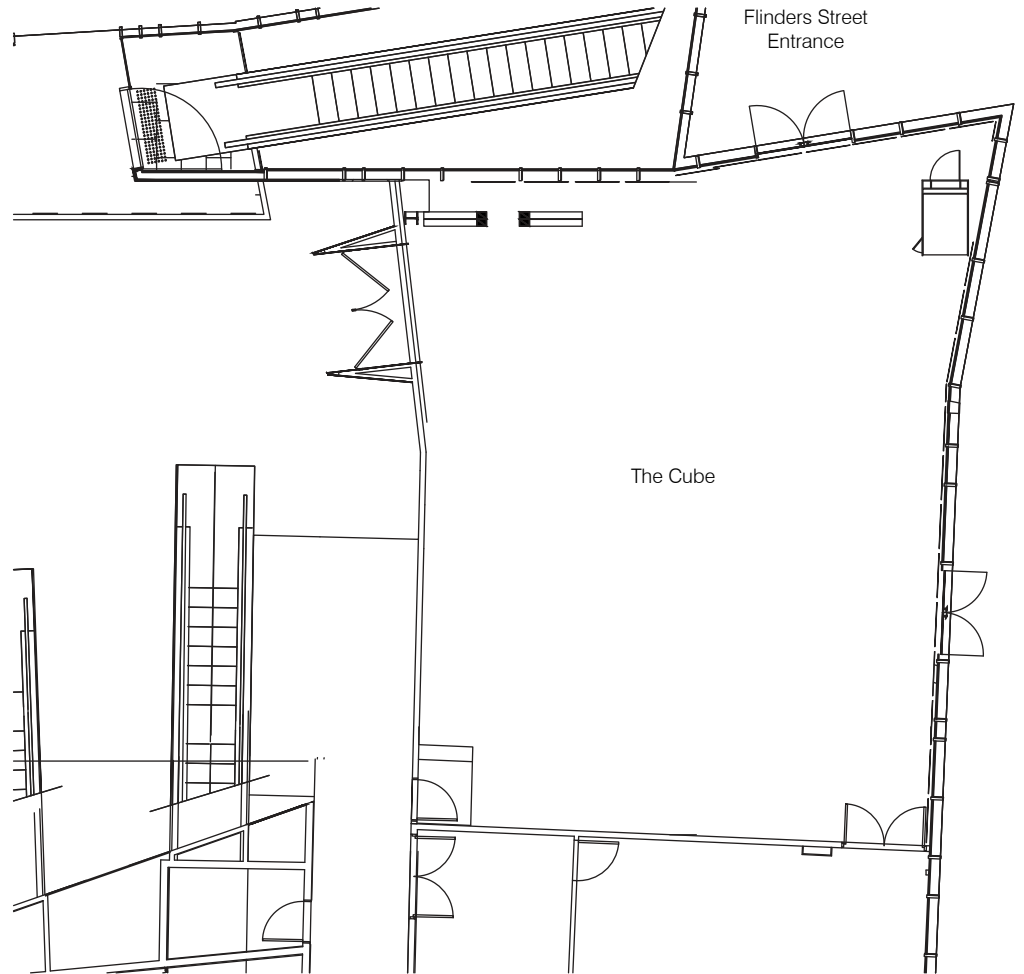


Cinema 2



The CUBE

A purpose designed function space, featuring floor to ceiling glass windows, ideal for meetings, workshops, cocktail events and dinners. With in house audio visual equipment, natural light and flexible set up options for your next business event.

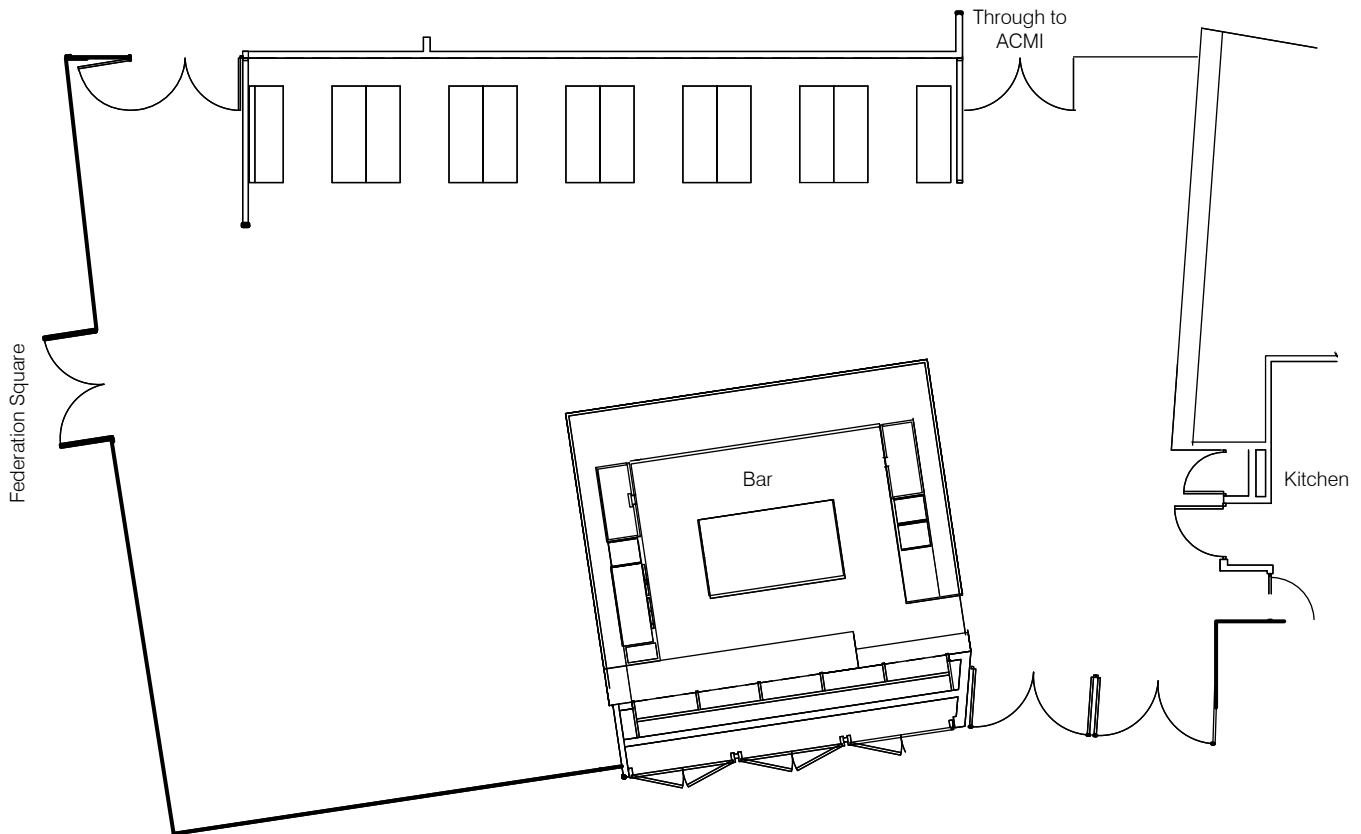


PETER ROWLAND



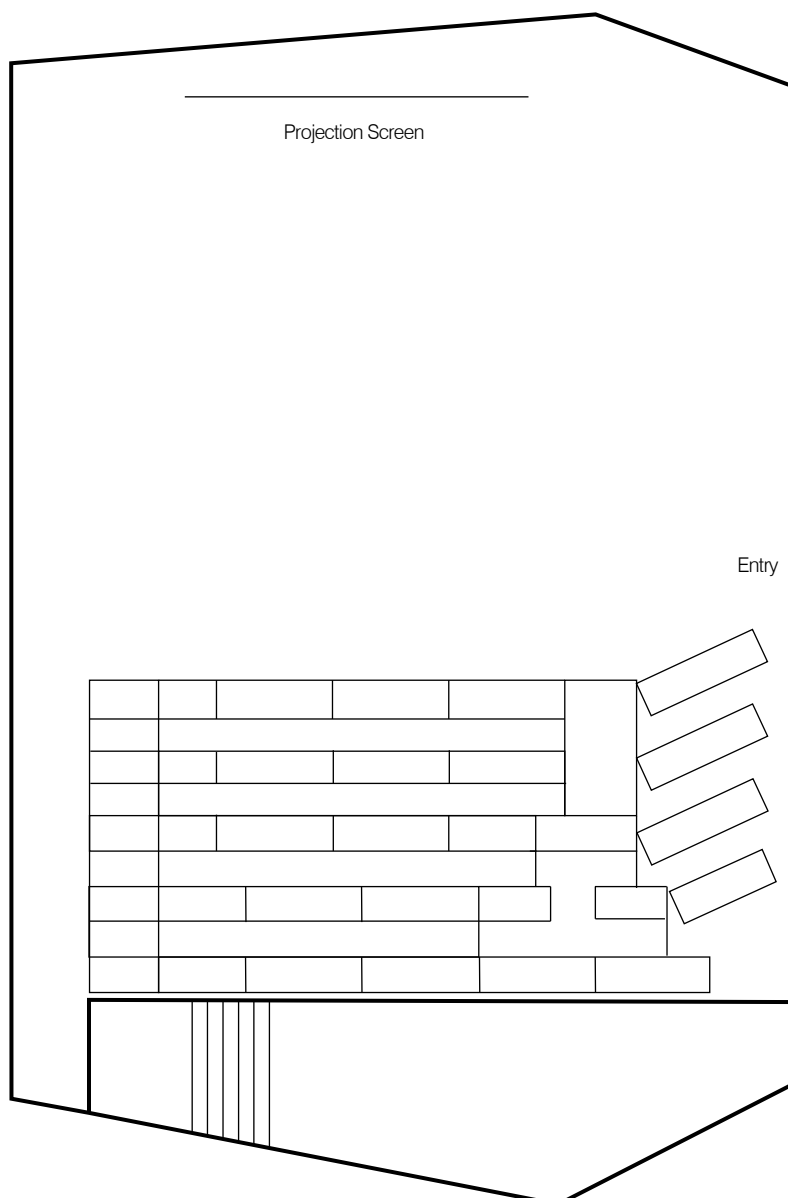
ACMI Cafe & Bar

An inviting and engaging hub looking out onto Federation Square, ideal for casual dining as well as cocktail parties, launches, film festival celebrations and dinners



Studio 1

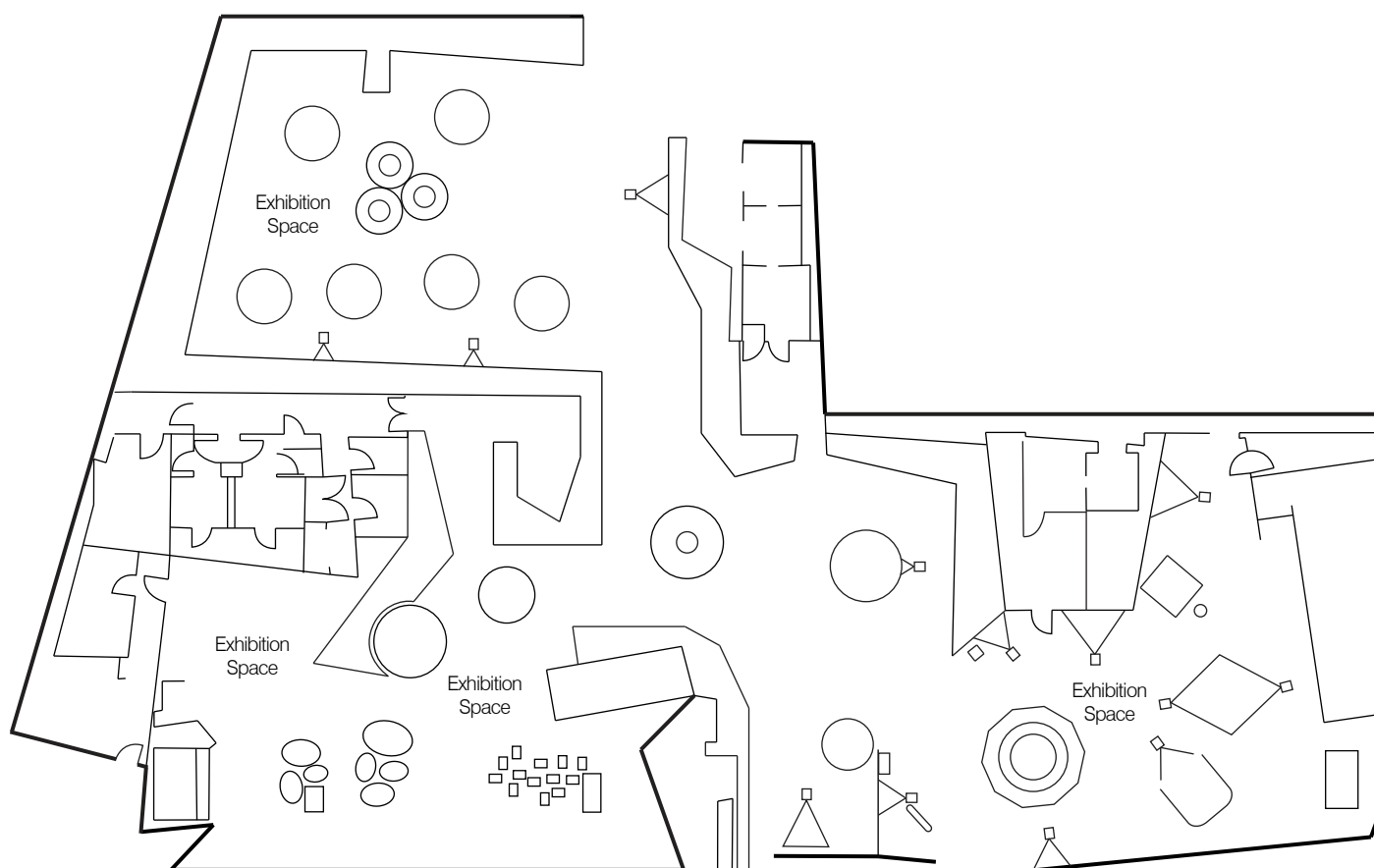
With comfortable tiered seating, a large stage area and options for a projector and lectern, Studio 1 is suitable for presentations, workshops, seminars and launches. The studio's green-screen and live camera feed capabilities are available to add extra impact to your event. Studio 1 can seat 70 people or hold 90 for a stand-up party.



Screen Worlds

ACMI's stunning exhibition
chronicling the history of the moving
image also doubles as an event
space with a difference.

Add a backdrop of moving images,
Hollywood glamour and interactive
entertainment to your cocktail party.





acmi
 >> AUSTRALIAN
 CENTRE FOR
 THE MOVING
 IMAGE

For more information please contact our sales team on:

+61 3 8663 2257 / acmi@peterrowland.com.au
 ACMI, Federation Square/Flinders St, Melbourne VIC 3000

This document is intended to be distributed electronically. Please consider the environment before you print. © Peter Rowland Catering

Peter Rowland Catering
 8 River St, South Yarra VIC 3141 +61 3 9825 0000
peterrowland.com.au info@peterrowland.com.au

PETER ROWLAND

