



doltone house

VENUE + CATERING COLLECTION

# JONES BAY WHARF

## BUSINESS EVENTS

SELECT YOUR SPACE

HERITAGE WHARF

SOHO

THE  
LOFT

SUITE  
43

SUITE  
55





**doltone house**

JONES BAY WHARF  
PYRMONT

# HERITAGE WHARF

## SYDNEY HARBOUR BACKDROP

Doltone House Jones Bay Wharf  
is a unique heritage venue situated on the  
restored historic finger wharf at Jones Bay Wharf, Pyrmont.

It is a spectacular waterfront venue on the foreshore of Sydney  
Harbour, with views of the Harbour Bridge, city skyline and the  
Darling Harbour precinct.

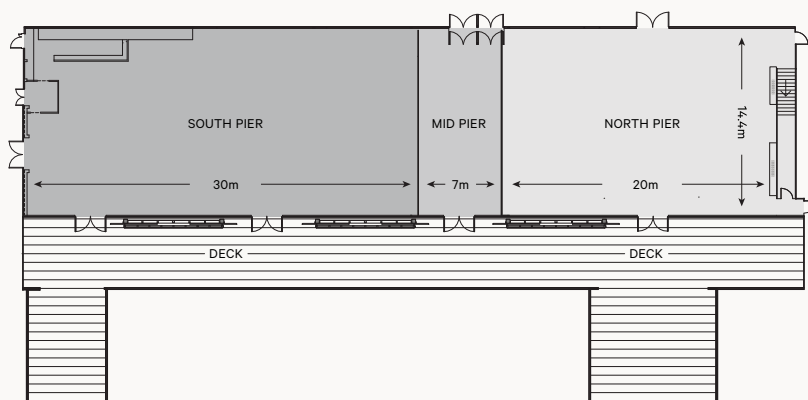
**WINNER**

MEETINGS AND EVENTS INDUSTRY HALL OF FAME  
SPECIALTY MEETING VENUE



# Jones Bay Wharf - HERITAGE WHARF

- Waterfront location with versatile spaces for up to 1000 guests
- Elevated full length private outdoor decking area with Harbour Bridge / City views
- 5 metre pillarless high ceiling with multiple rigging points
- State of the art Audio Visual (AV), lighting and staging infrastructure
- Two commercial kitchens with dedicated Kitchen crews
- Blackout facilities
- Lift and disabled access



Waterfront venue with Harbour Bridge and city skyline views



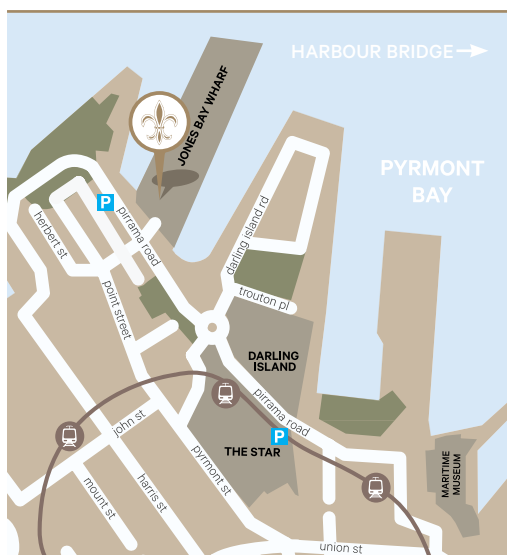
## FOOD & CATERING - AWARD WINNING -

Serving Sydney's best quality produce, from the freshest of seafoods, and the premium cut of meats, we source only the highest standard for you.

## CAPACITIES & FACILITIES

|                          | Heritage Wharf | South Pier | North Pier | The Loft     |
|--------------------------|----------------|------------|------------|--------------|
| COCKTAIL                 | 1000           | 500        | 400        | 250          |
| BANQUET                  | 700            | 350        | 250        | 170          |
| THEATRE                  | 900            | 450        | 350        | 100          |
| CLASSROOM                | 500            | 250        | 150        | 60           |
| AUDIO VISUAL             | ✓              | ✓          | ✓          | ✓            |
| VIDEO CONFERENCING       | ✓              | ✓          | ✓          | -            |
| PARKING                  | ✓              | ✓          | ✓          | ✓            |
| DISABLED ACCESS          | ✓              | ✓          | ✓          | Ground floor |
| HIGH SPEED WIFI INTERNET | ✓              | ✓          | ✓          | ✓            |

Not to scale, capacities subject to event set up requirements



## LOCATION

The setting offers an event experience on the best harbour in the world, an ideal venue location and a very unique address for your next event.

Only minutes from our Darling Island Wharf venue and the Darling Harbour precinct, Doltone House Jones Bay Wharf is within easy walking distance of the CBD and all the attractions that Sydney city has to offer.

The venue may be accessed by boat, water taxi, ferry, light rail, bus or private transport.

**Jones Bay Wharf**  
26-32 Pirrama Road,  
Pyrmont. 2009

## PARKING

Parking is available directly across the road from the venue in the Jones Bay Wharf Car Park or at The Star. You may enter the venue from the street level stairs or dedicated lift on Pirrama Road.



**doltone house**

JONES BAY WHARF  
PYRMONT

# SoHo

Complementing Jones Bay Wharf's heritage charm, newest addition to the venue portfolio. Multi award winning designer, Greg Natale's New York inspired studio design, ideal for meetings, dining and mingling with elevated harbour views.



# JONES BAY WHARF – SOHO

- C-level management suite
- Breakout meeting space
- Private dining, exclusive designer space
- Lectern/Microphone, surround speakers for background music
- 65" LCD screen
- Projector and screens available
- Outdoor private elevated decking
- Floor to ceiling windows
- Abundance of natural light
- Two level designer contemporary fit out
- Blackout facilities available



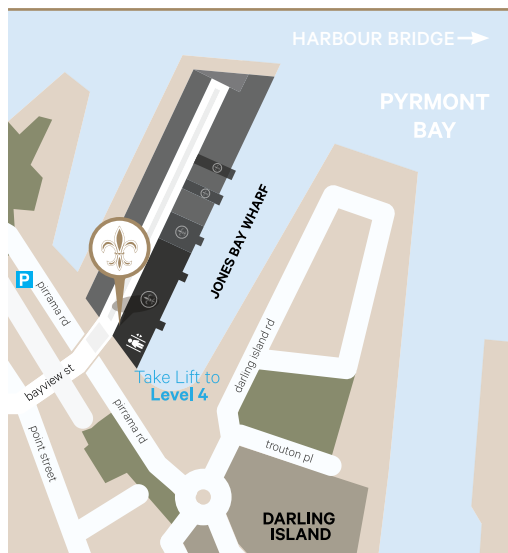
| CAPACITIES | BANQUET | THEATRE | COCKTAIL |
|------------|---------|---------|----------|
|            | 80      | 100     | 120      |

Not to scale, capacities subject to event set up requirements

## FOOD & CATERING

- AWARD WINNING -

Serving Sydney's best quality produce, from the freshest of seafoods, and the premium cut of meats, we source only the highest standard for you.



## LOCATION

The setting offers an event experience on the best harbour in the world, an ideal venue location and a very unique address for your next event.

Only minutes from our Darling Island Wharf venue and the Darling Harbour precinct, Doltone House Jones Bay Wharf is within easy walking distance of the CBD and all the attractions that Sydney city has to offer.

The venue may be accessed by boat, water taxi, ferry, light rail, bus or private transport.

**Jones Bay Wharf**  
Level 4  
26-32 Pirrama Road,  
Pyrmont 2009

## PARKING

Parking is available directly across the road from the venue in the Jones Bay Wharf Car Park or at The Star. You may enter the venue from the street level stairs or dedicated lift on Pirrama Road.



**doltone house**

JONES BAY WHARF  
PYRMONT

## THE LOFT

### SYDNEY HARBOUR BACKDROP

Doltone House Jones Bay Wharf  
is a unique heritage venue situated on the  
restored historic finger wharf at Jones Bay Wharf, Pyrmont.

It is a spectacular waterfront venue on the foreshore of Sydney  
Harbour, with views of the Harbour Bridge, city skyline and the  
Darling Harbour precinct.

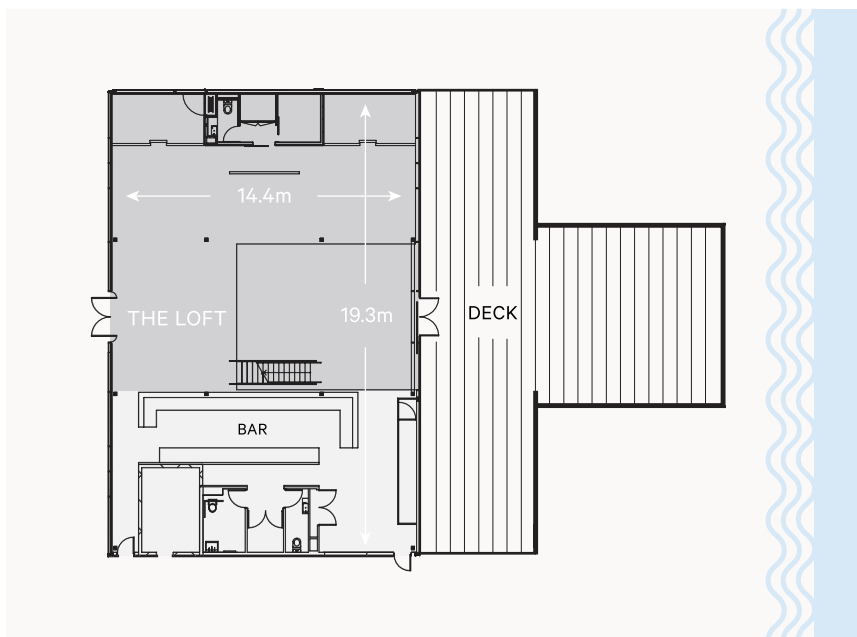
**WINNER**

MEETINGS AND EVENTS INDUSTRY HALL OF FAME  
SPECIALTY MEETING VENUE



# Jones Bay Wharf - THE LOFT

- Waterfront location
- Private deck area with Harbour Bridge / City views
- Fully air-conditioned
- Features polished wooden floors, white gold mosaic tiles and a marble bar
- Private entrance for VIP arrival
- Natural light
- Telephone lines
- Internet access
- Lift and disabled access



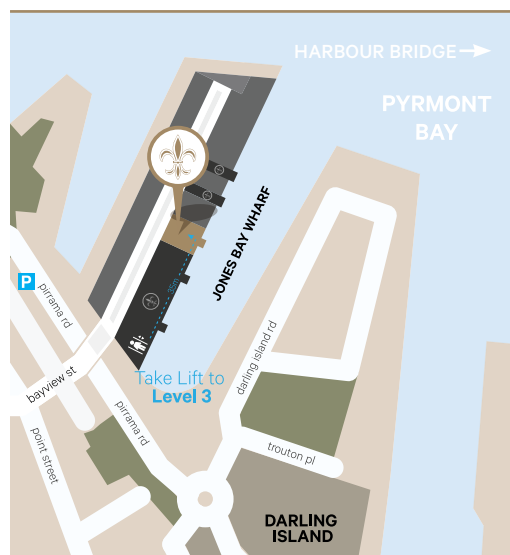
| CAPACITIES | DINNER | DINNER DANCE | COCKTAIL | THEATRE | BOARDROOM | CABARET | CLASSROOM |
|------------|--------|--------------|----------|---------|-----------|---------|-----------|
|            | 170    | 170          | 250      | 100     | 50        | 80      | 60        |

Not to scale, capacities subject to event set up requirements

## FOOD & CATERING

- AWARD WINNING -

Serving Sydney's best quality produce, from the freshest of seafoods, and the premium cut of meats, we source only the highest standard for you.



## LOCATION

The setting offers an event experience on the best harbour in the world, an ideal venue location and a very unique address for your next event.

Only minutes from our Darling Island Wharf venue and the Darling Harbour precinct, Doltone House Jones Bay Wharf is within easy walking distance of the CBD and all the attractions that Sydney city has to offer.

The venue may be accessed by boat, water taxi, ferry, light rail, bus or private transport.

**Jones Bay Wharf**  
26-32 Pirrama Road,  
Pyrmont. 2009

## PARKING

Parking is available directly across the road from the venue in the Jones Bay Wharf Car Park or at The Star. You may enter the venue from the street level stairs or dedicated lift on Pirrama Road.





**doltone house**

JONES BAY WHARF  
PYRMONT

## SUITE 43

### SYDNEY HARBOUR BACKDROP

Doltone House Jones Bay Wharf  
is a unique heritage venue situated on the  
restored historic finger wharf at Jones Bay Wharf, Pyrmont.

It is a spectacular waterfront venue on the foreshore of Sydney  
Harbour, with views of the Harbour Bridge, city skyline and the  
Darling Harbour precinct.

**WINNER**

MEETINGS AND EVENTS INDUSTRY HALL OF FAME  
SPECIALTY MEETING VENUE



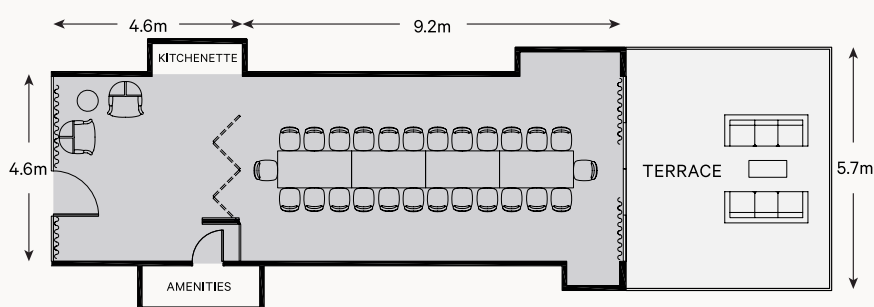
# Jones Bay Wharf - SUITE 43

- Waterfront location
- Private deck area
- Lift and disable access
- Fully air-conditioned
- Custom fit-out by Award Winning Designer
- Natural light
- Views of city skyline
- Plasma screen
- Internet access
- Telephone lines

## CAPACITY

25

Not to scale, capacities subject to event set up requirements



Waterfront venue  
with Harbour Bridge and  
city skyline views

## FOOD & CATERING

- AWARD WINNING -

Serving Sydney's best quality produce, from the freshest of seafoods, and the premium cut of meats, we source only the highest standard for you.



## LOCATION

The setting offers an event experience on the best harbour in the world, an ideal venue location and a very unique address for your next event.

Only minutes from our Darling Island Wharf venue and the Darling Harbour precinct, Doltone House Jones Bay Wharf is within easy walking distance of the CBD and all the attractions that Sydney city has to offer.

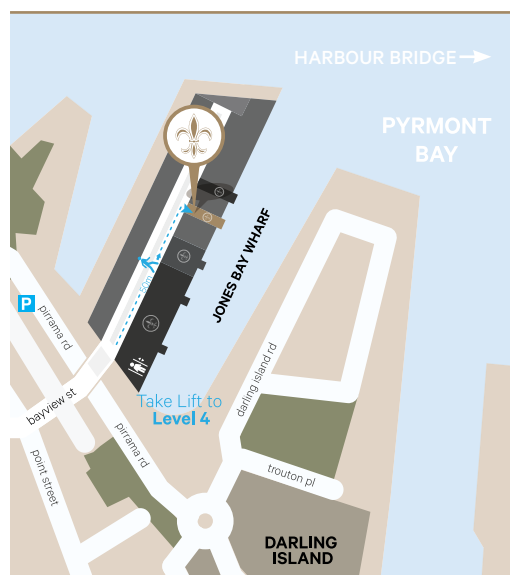
The venue may be accessed by boat, water taxi, ferry, light rail, bus or private transport.

## Jones Bay Wharf

26-32 Pirrama Road,  
Pyrmont. 2009

## PARKING

Parking is available directly across the road from the venue in the Jones Bay Wharf Car Park or at The Star. You may enter the venue from the street level stairs or dedicated lift on Pirrama Road.







**doltone house**

JONES BAY WHARF  
PYRMONT

## SUITE 55

### SYDNEY HARBOUR BACKDROP

Doltone House Jones Bay Wharf  
is a unique heritage venue situated on the  
restored historic finger wharf at Jones Bay Wharf, Pyrmont.

It is a spectacular waterfront venue on the foreshore of Sydney  
Harbour, with views of the Harbour Bridge, city skyline and the  
Darling Harbour precinct.

**WINNER**

MEETINGS AND EVENTS INDUSTRY HALL OF FAME  
SPECIALTY MEETING VENUE



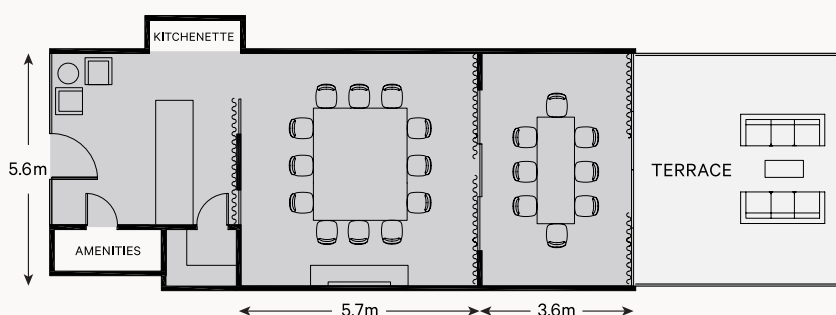
# Jones Bay Wharf - SUITE 55

- Waterfront location
- Private deck area
- Lift and disable access
- Fully air-conditioned
- Custom fit-out by Award Winning Designer
- Natural light
- Views of city skyline
- Plasma screen
- Internet access
- Telephone lines

## CAPACITY

12 + 8

Not to scale, capacities subject to event set up requirements



Waterfront venue  
with Harbour Bridge and  
city skyline views

## FOOD & CATERING

- AWARD WINNING -

Serving Sydney's best quality produce, from the freshest of seafoods, and the premium cut of meats, we source only the highest standard for you.

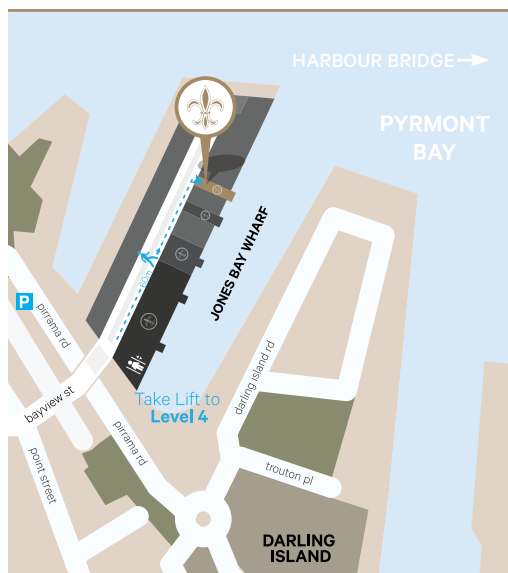


## LOCATION

The setting offers an event experience on the best harbour in the world, an ideal venue location and a very unique address for your next event.

Only minutes from our Darling Island Wharf venue and the Darling Harbour precinct, Doltone House Jones Bay Wharf is within easy walking distance of the CBD and all the attractions that Sydney city has to offer.

The venue may be accessed by boat, water taxi, ferry, light rail, bus or private transport.



**Jones Bay Wharf**  
26-32 Pirrama Road,  
Pyrmont. 2009

## PARKING

Parking is available directly across the road from the venue in the Jones Bay Wharf Car Park or at The Star. You may enter the venue from the street level stairs or dedicated lift on Pirrama Road.





**doltone house**

VENUE + CATERING COLLECTION

**JONES BAY WHARF**

26-32 PIRRAMA ROAD,  
PYRMONT 2009

**P** 02 8571 0622

**E** [INFO@DOLTONEHOUSE.COM.AU](mailto:INFO@DOLTONEHOUSE.COM.AU)

**[DOLTONEHOUSE.COM.AU](http://DOLTONEHOUSE.COM.AU)**